



FOTOSEPTIEMBREUSA<sup>®</sup>  
SAFOTO<sup>®</sup>  
2006 EXHIBITIONS PROGRAM

FOTOSEPTIEMBREUSA®  
SAFOTO®  
2006 EXHIBITIONS PROGRAM

Front cover | Clockwise from top

REIKO IMOTO  
ROLAND WIRTZ  
DAMIAN BORGES  
ANSEN SEALE  
STEVE MALAVOLTA

Back cover | Clockwise from top left

SAUL ZANOLARI  
JUAN CARLOS BATISTA  
SUSANNE YORK  
VINTAGE POSTCARD  
JESSICA GONZALEZ

---

FOTOSEPTIEMBREUSA®  
SAFOTO®  
2006 EXHIBITIONS PROGRAM

SAFOTO WEB GALLERIES  
&  
PREMIUM LISTINGS

IN CHRONOLOGICAL ORDER BY OPENING RECEPTION DATE

---

WWW.FOTOSEPTIEMBREUSA.COM  
WWW.SAFOTOFESTIVAL.COM

GALLERY 1  
[www.safotofestival.com/galleries.html](http://www.safotofestival.com/galleries.html)

**SAUL ZANOLARI**  
(Switzerland)

***Camp***

Curated by Michael Mehl

On display through January, 2007

Also at [www.saulzanolari.com](http://www.saulzanolari.com)



GALLERY 2  
[www.safotofestival.com/galleries.html](http://www.safotofestival.com/galleries.html)

**JUAN CARLOS BATISTA**  
(Canary Islands, Spain)

***La Tierra De Los Prodigios***

Curated by Michael Mehl

On display through January, 2007

Also at [www.juancarlosbatista.com](http://www.juancarlosbatista.com)



GALLERY 3  
[www.safotofestival.com/galleries.html](http://www.safotofestival.com/galleries.html)

**JESSICA GONZALEZ**  
(México - France)

***Vitrines II***

Curated by Michael Mehl

On display through January, 2007





GALLERY 4  
[www.safotofestival.com/galleries.html](http://www.safotofestival.com/galleries.html)

**SUSANNE YORK**  
(Houston, TX)

***Painted Fish***

Curated by Michael Mehl

On display through January, 2007

Also at [www.susanneyork.com](http://www.susanneyork.com)



GALLERY 5  
[www.safotofestival.com/galleries.html](http://www.safotofestival.com/galleries.html)

**VARIOUS ARTISTS**  
(Europe)

***Grüßkarten***

Vintage German and French  
photographic greeting cards  
from the collection of  
Fred & Roseanne White  
in San Antonio, TX

Curated by Michael Mehl

On display through January, 2007



GALLERY 6  
[www.safotofestival.com/galleries.html](http://www.safotofestival.com/galleries.html)

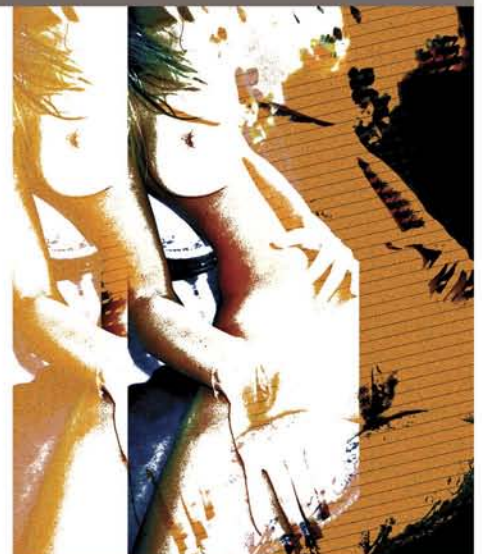
**MICHAEL MEHL**  
(San Antonio, TX)

***Toccata Fugáz***

Curated by Michael Mehl

On display through January, 2007

Also at [www.michaelmehl.com](http://www.michaelmehl.com)



THURSDAY, AUGUST 24, 2006

JAYNE HINDS BIDAUT, ELLEN CAREY, SEAN CULVER, DAN ESTABROOK  
DEBORAH LUSTER, DANA MOORE, FRANCE SCULLY OSTERMAN  
MARK OSTERMAN, IRVING POBBORAVSKY, ROLAND WIRTZ

## *Casting A New Light*

An exhibit by contemporary U.S. artists using historic photographic processes

Curated by Alyssa C. Salomon and Jerry Spagnoli

Russell Hill Rogers Galleries | Navarro Campus | Southwest School of Art & Craft  
1201 Navarro, San Antonio, TX 78205 | [www.swschool.org](http://www.swschool.org)

Opening reception: Thursday, August 24, 5:30 - 7:30 pm

Exhibit on display: August 24 - October 22, 2006

Viewing hours: Mon - Sat, 9 am - 5 pm; Sun, 11 am - 4 pm

Contact: Kathy Armstrong (210) 271-3374 | [karmstrong@swschool.org](mailto:karmstrong@swschool.org)

France Scully Osterman will present a lecture on October 13, and will conduct a Ruby Ambrotype workshop on October 14. See Basic Listings section for more information



CAREY

THURSDAY, AUGUST 24, 2006

JILL SKUPIN BURKHOLDER, KAREN HOGENSEN, RALPH HOWELL  
ROBB KENDRICK, MARTIN RODRIGUEZ

## *Alchemy*

An exhibit of South Texas artists exploring the use of alternative photographic processes for contemporary image-making

Curated by Kathy Armstrong

Ursuline Hall Gallery | Ursuline Campus | Southwest School of Art & Craft  
300 Augusta, San Antonio, TX 78205 | [www.swschool.org](http://www.swschool.org)

Opening reception: Thursday, August 24, 5:30 - 7:30 pm

Exhibit on display: August 24 - October 22, 2006

Viewing hours: Mon - Sat, 9 am - 5 pm; closed Sundays

Contact: Kathy Armstrong (210) 271-3374 | [karmstrong@swschool.org](mailto:karmstrong@swschool.org)



KENDRICK

THURSDAY, AUGUST 31, 2006

## KENT RUSH

### *Oddments: Photographs in Ink by Kent Rush*

StoneMetal Press

1420 South Alamo, Bldg B, #104, San Antonio, TX 78210

[www.stonemetal-press.com](http://www.stonemetal-press.com)

UTSA Department of Art and Art History Professor and Chair, Kent Rush, MFA explores tone, line, and texture through photographs of odd concrete forms and creates originals printed in the arcane, 19th century photomechanical process of collotype

Opening reception: Thursday, August 31, 5 - 8 pm

Exhibit on display: August 31 - September 24, 2006

Viewing hours: Mon - Sun, 1 - 5 pm; closed Tuesdays

Contact: Jim Kane (210) 227-0312

[prints@stonemetal-press.com](mailto:prints@stonemetal-press.com)





# FOTOSEPTIEMBRE USA 2006

THURSDAY, AUGUST 31, 2006

PREMIUM LISTINGS

ASHLEY KNUDSEN BAKER, STEVE CARTER, SILVIE COVEY, MARGARET CRAIG  
MELANIE CRAVEN, MICHELLE CRAVEN, NEAL COX, DENIS DEFIBAUGH  
EDWARD FAUSTY, JANET FLOHR, JIM HAJICEK, ROSE HARMS  
CHARLES HEASLEY, LANDA KING, KENT KIRBY, RACHEL REISERT  
JENNIFER SHERRELL, PAUL THIRKELL

**Collotypes: Recent photographs in a not so recent process**

This exhibit is presented in memory of Kent Kirby, pioneer in the artistic use of collotype

Curated by Kent Rush (UTSA) and Jim Hajicek (ASU)

UTSA Satellite Space  
115 Blue Star, San Antonio, TX 78204

Opening reception: Thursday, August 31, 6 - 9 pm  
Exhibit on display: August 31 - September 24, 2006  
Viewing hours: Fri - Sun, 12 - 6 pm  
Contact: Jasmyne Graybill (210) 212-7146 | [jasmyne-graybill@utsa.edu](mailto:jasmyne-graybill@utsa.edu)



KIRBY

FRIDAY, SEPTEMBER 1, 2006

**FAUSTINUS DERAET**

***Mientras Vagaba Por El DF***

Rendon Photography & Fine Art  
733 South Alamo  
San Antonio, TX 78205  
[www.alrendon.com](http://www.alrendon.com)

Opening reception: Friday, September 1, 6:30 - 9:30 pm  
Exhibit on display: September 1 - October 16, 2006  
Viewing hours: By appointment after opening reception  
Contact: Al Rendon (210) 225-2287 | [alrendon@sbcglobal.net](mailto:alrendon@sbcglobal.net)

Book signing by Faustinus Deraet during opening reception



FRIDAY, SEPTEMBER 1, 2006

**ANSEN SEALE**

***Blood Lines***

Sala Díaz  
517 Stieren  
San Antonio, TX 78210

Opening reception: Friday, September 1, 9 - 12 pm  
Exhibit on display: September 1 - 30, 2006  
Viewing hours: By appointment after opening reception  
Contact: Ansen Seale (210) 348-0800  
[ansen@ansenseale.com](mailto:ansen@ansenseale.com) | [www.ansenseale.com](http://www.ansenseale.com)



## YOUNG PHOTOGRAPHERS

**Bexar Land Trust: Picture Your World | Presented by Texas Public Radio**

Russell Hill Rogers Lecture Hall | Navarro Campus  
Southwest School of Art & Craft  
1201 Navarro, San Antonio, TX 78205 | [www.swschool.org](http://www.swschool.org)

Opening reception: Friday, September 1, 6 - 9 pm  
Exhibit on display: August 24 - October 22, 2006  
Viewing hours: Mon - Sat, 9 am - 5 pm; Sun, 11 am - 4 pm  
Contact: Pat Oathout (210) 614-8977 | [patricia@tpr.org](mailto:patricia@tpr.org) | [www.tpr.org](http://www.tpr.org)

This exhibit, Texas Public Radio's annual *Focus on the Environment* kick-off event, in partnership with the Bexar Land Trust, presents a series of nature photographs made by children 8 to 18. *Picture Your World* puts our youth in touch with their natural environment, engaging them in the wonderful details of our surrounding flora and fauna the weather, and insects. The project includes photo clinics, photo safaris and field trips with nature photographer Ruth Hoyt. There are currently over 900 spectacular images from this project in the Bexar Land Trust collection ([www.bexarlandtrust.org](http://www.bexarlandtrust.org))



JOE WEBB (John Marshall High School)

## THURSDAY, SEPTEMBER 7, 2006

### HANK AUDERER

**Notations In Mexico**

UNAM San Antonio  
600 Hemisfair Park  
San Antonio, TX 78205  
[www.usa.unam.edu](http://www.usa.unam.edu)

Opening reception: Thursday, September 7, 6 pm  
Exhibit on display: September 7 - October 6, 2006  
Viewing hours: Mon - Thu, 9 am - 5 pm; Fri, 9 am - 4 pm  
Contact: Ana María Fox Baker  
(210) 222-8626 | [amfbw@servidor.unam.mx](mailto:amfbw@servidor.unam.mx)



## THURSDAY, SEPTEMBER 7, 2006

### SLAB CINEMA FOTO FILM FESTIVAL

**Black Cobra | Murder With Pictures | My Favorite Brunette**

Featuring photography related films in the public domain

Curated by Angela Martínez

La Tuna Slab  
100 Probandt, San Antonio, TX 78204

Show dates and times:  
Black Cobra (1987), Thursday, September 7, 9 pm  
Murder With Pictures (1936), Thursday, September 14, 9 pm  
My Favorite Brunette (1947), Thursday, September 21, 9 pm  
Pre-shows at 8:15 pm

Contact: Angela Martínez (210) 212-9373  
[angela@saevents.org](mailto:angela@saevents.org) | [www.slabcinema.com](http://www.slabcinema.com)



MY FAVORITE BRUNETTE



## VARIOUS PHOTOGRAPHERS

### *Diez y Seis de San Antonio*

Vintage photographs from the collection of the UTSA Institute of Texan Cultures

Coordinated by the City of San Antonio Diez y Seis Commission in partnership with the UTSA Institute of Texan Cultures

Guadalupe Cultural Arts Center  
Visual Media Arts School & Gallery  
719 South Brazos, San Antonio, TX 78207  
(210) 271-3151

Opening reception: Thursday, September 7, 7 pm  
Exhibit on display: September 1 - 22, 2006  
Viewing hours: Mon - Fri, 9 am - 5 pm  
Contact: Mariscela Aguirre (210) 207-8979  
mariscela.aguirre@sanantonio.gov



## FRIDAY, SEPTEMBER 8, 2006

### JAN BARFIELD

#### *Architectural Fruit Bowl*

Studio 794  
Sunset Station in Historic St. Paul Square  
1174 East Commerce at Hoefgen  
San Antonio, TX 78205

Opening reception: Friday, September 8, 6 - 9 pm  
Exhibit on display: September 1 - 30, 2006  
Viewing hours: By appointment after opening reception  
Contact: Jan Barfield (210) 822-7941  
jan@janbarfield.com | www.janbarfield.com

Parking on Hoefgen Avenue



## FRIDAY, SEPTEMBER 8, 2006

JUAN MIGUEL RAMOS  
TRISH SIMONITE  
KATHY VARGAS

#### *New Works*

Three artists explore different expressions and interpretations of the photographic process

Galería Ortiz Contemporary  
4026 McCullough  
San Antonio, TX 78212

Opening reception: Friday, September 8, 6 - 8 pm  
Exhibit on display: September 8 - October 21, 2006  
Viewing hours: Tue- Sat, 10 am - 5:30 pm  
Contact: Diana Roberts or Lisa Ortiz  
(210) 826-8623 | gocontemporary@earthlink.net



SIMONITE

**KEN GIRARDINI  
STEVE MALAVOLTA  
EDDIE SOLOWAY**

***Landscapes Off The Edge***

Bella Creo Gallery  
412 River Road, Suite 101  
Boerne, TX 78006  
www.bellacreogallery.com

Opening reception: Friday, September 8, 5 - 8 pm  
Exhibit on display: September 6 - 30, 2006  
Viewing hours: Wed - Sat, 11 am - 6 pm (until 8 pm on Fri)  
Sun, 12 - 5 pm; Mon - Tue, closed  
Contact: Charles or Tami Kegley  
(830) 248-1919 | bellacreogallery@mac.com



SOLOWAY



MALAVOLTA



GIRARDINI

**SATURDAY, SEPTEMBER 9, 2006**

**ALEXANDRA COLLINS, BETH COYLE  
CHRISTEN COYLE, RUDY FLORES  
LIZBETH GUERRINA, DAWN GWIN  
PAT MARINCE, TYLER RUTHERFORD  
DAVE SIMMONS, LARRY WOODS**

***Inspiration: My Favorite Photographer***

Organized by the Cibolo Arts Council

Cibolo Nature Center  
140 City Park Road, Boerne, TX 78006 | (830) 249-4616

Opening reception: Saturday, September 9, 6 - 9 pm  
Exhibit on display: September 9 - 22, 2006  
Viewing hours: Mon - Sat, 9 am - 5 pm; Sun, 1 - 4 pm  
Contact: Georganna Dillon (210) 507-5053  
Cibolo Arts Council, PO Box 2024, Boerne TX, 78006  
www.ciboloarts.org | ciboloartscouncil@mac.com



RUTHERFORD



MARINCE

**SUNDAY, SEPTEMBER 10, 2006**

**JOHN MOLER**

***Still Lives***

Huisache Grill  
303 West San Antonio Street  
New Braunfels, TX 78130  
(830) 620-9001

Opening reception: Sunday, September 10, 3 - 5 pm  
Exhibit on display: September 1 - October 15, 2006  
Viewing hours: Mon - Sun, 10 am - 10 pm  
Contact: John Moler (830) 625-4510 | jem@compuvision.net





SEAN FITZGERALD, MICHAEL FRANCIS, D.ROBERT FRANZ, JOHN HENDRICKSON  
CATHY ILLG, WOLFGANG KAEHLER, LEO KEELER, JESS LEE, ROLF NUSSBAUMER  
AL PERRY, LYNDA RICHARDSON, FLORIAN SCHULZ, MIKE SLOAT, TOM J. ULRICH  
GARY VESTAL, DAVE WELLING, JEREMY WOODHOUSE

**Select Photographs From The Images For Conservation Fund 2006 Pro-Tour**

Juried by Rosamund Kidman Cox, Stephen B. Freligh and Art Wolfe

Photography 414 | 414 East Main Street, Fredericksburg, TX 78624  
www.photography414.com

Opening reception: Sunday, September 10, 1 - 5 pm  
Exhibit on display: September 1 - October 7, 2006  
Viewing hours: Wed - Sat, 11 am - 7 pm  
Contact: Julie Ann Shipp, Dr. José Lopez  
(830) 990-1330 | julie@photography414.com

Organized by John Martin, Chair, Images For Conservation Fund  
www.imagesforconservation.org



SEAN FITZGERALD (Petersen Ranch)

**TUESDAY, SEPTEMBER 12, 2006**

**DEBORAH KELLER-RIHN**

***The 21 Aspects of Tara***

Airport Art Spaces, Terminal 1  
9800 Airport Boulevard, San Antonio, TX 78216  
www.sanantonio.gov/aviation/info\_art\_rotating.asp

Opening reception: Tuesday, September 12, 6 - 8 pm  
Exhibit on display: September 12 - December 18, 2006  
Viewing hours: 24/7  
Contact: Airport Art Spaces Curator Diana Roberts  
(210) 535-7215 | dianadanville@msn.com

Tara is the Tibetan goddess of compassion. It is said she was a mortal woman before becoming a goddess. These photographs of real women are subjective interpretations of iconic Buddhist images, and represent various manifestations of enlightened female energy

Free parking with validation at opening reception only



**FRIDAY, SEPTEMBER 15, 2006**

**D. CLARKE EVANS  
JESSE HERRERA  
CECILIA INIGUEZ  
MARK MENJIVAR  
MADISON NYE  
MICHAEL NYE  
JOANNA ZAMARRON**

***Witnessing, Still***

Curated by Kathy Vargas

Centro Cultural Aztlan  
1800 Fredericksburg Road, San Antonio, TX 78201 | www.sacalaveras.com

Opening reception: Friday, September 15, 6:30 - 9 pm  
Exhibit on display: September 15 - October 13, 2006  
Viewing hours: Mon - Fri, 9 am - 5 pm  
Contact: Malena Gonzalez-Cid or Denise H. Cadena  
(210) 432-1896 | ccaztlan@swbell.net



HERRERA



## REIKO IMOTO

### *Dreamscapes | Triptychs*

Curated by Michael Mehl

Bihl Haus Arts | 2803 Fredericksburg Road (Primrose Apartments)  
San Antonio, TX 78201  
[www.bihlhausarts.org](http://www.bihlhausarts.org)

Opening reception: Friday, September 15, 5:30 - 8 pm  
Exhibit on display: September 15 - October 30, 2006  
Viewing hours: Fri - Sat, 1 - 4 pm, and by appointment  
Contact: Kellen Kee McIntyre (210) 383-9723 | [kellenkee@swbell.net](mailto:kellenkee@swbell.net)

Reiko Imoto was born in Japan and currently lives and works in Belgium

Support for this exhibit is provided by the City of San Antonio Office of Cultural Affairs



DETAIL FROM DREAMSCAPE 2 TRIPTYCH

FRIDAY, SEPTEMBER 15, 2006

## LUIS DELGADO

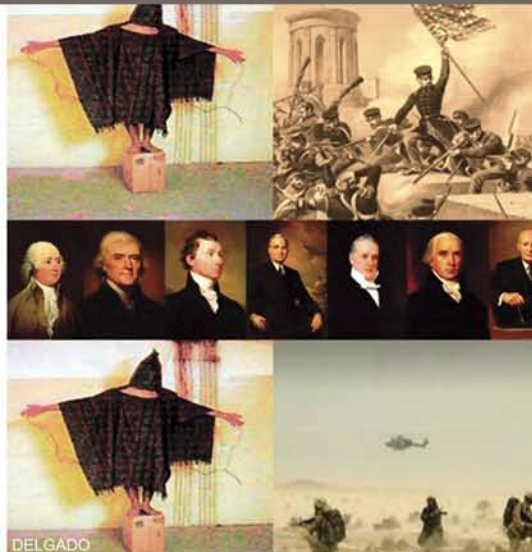
### *Unfathomable Humanity*

## JOSE MARTINEZ VERA

### *Suitcase Soul*

Photography 414  
414 East Main Street, Fredericksburg, TX 78624  
[www.photography414.com](http://www.photography414.com)

Opening reception: Friday, September 15, 5 - 7 pm  
Exhibit on display: September 1 - October 7, 2006  
Viewing hours: Wed - Sat, 11 am - 7 pm  
Contact: Julie Ann Shipp, Dr. José Lopez  
(830) 990-1330 | [julie@photography414.com](mailto:julie@photography414.com)



DELGADO



MARTINEZ VERA

SATURDAY, SEPTEMBER 16, 2006

## THERESE MULLIGAN, PhD

### *The Blind Man's Elephant: Photography and Collecting*

Slide Lecture and discussion about current trends in private and institutional collections  
Organized by Kellen Kee McIntyre

Bihl Haus Arts | 2803 Fredericksburg Road (Primrose Apartments), San Antonio, TX 78201  
[www.bihlhausarts.org](http://www.bihlhausarts.org)

Gallery talk: Saturday, September 16, 3 - 4 pm, group discussion: 4 - 5 pm  
Contact: Kellen Kee McIntyre (210) 383-9723 | [kellenkee@swbell.net](mailto:kellenkee@swbell.net)

Therese Mulligan is a professor and coordinator of the MFA in Imaging Arts program in the School of Photographic Arts and Sciences at the Rochester Institute of Technology. She is also the School's gallery director, and, for eight years, was the curator of photography at George Eastman House. She has organized numerous exhibitions, and has authored and edited articles and publications on historical and contemporary photography.

Support for this event is provided by the City of San Antonio Office of Cultural Affairs



IMOTO



VIVIANA ADONAYLO, SALVADOR AZNAR, IVAN BALLESTEROS, JUAN CARLOS BATISTA  
DAMIAN BORGES, JOSE OLLER, CARLOS A. SCHWARTZ

## *A Ojo De Canario*

Curated by Michael Mehl, this exhibit of contemporary images by Canary Island photographers is part of the San Antonio Sister City Cultural Exchange Initiative

City of San Antonio International Center | 203 South Saint Mary's, San Antonio, TX 78205

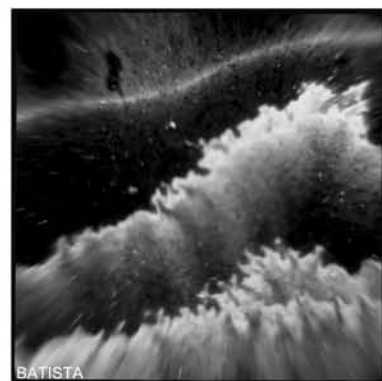
Opening reception: Tuesday, September 19, 6 - 8 pm

Exhibit on display: September 5 - November 30, 2006

Viewing hours: Mon - Fri, 9 am - 5 pm

Contact: Colleen Swain (210) 207-4089 | [cswain@sanantonio.gov](mailto:cswain@sanantonio.gov)

Support for this exhibit is provided by the City of San Antonio Office of Cultural Affairs and Department of Asset Management; Friends of the Canary Islands-San Antonio; Centro de Fotografia Isla de Tenerife, Cabildo de Tenerife, and Canarias Cultura en Red-Gobierno de Canarias



**GABRIEL GUZMAN**

***Visions Of Oaxaca***

C-Art  
1426 West Craig, San Antonio, TX 78201  
[myspace.com/c\\_artstudio](http://myspace.com/c_artstudio)

Opening reception: Wednesday, September 20, 6 - 10 pm  
Exhibit on display: September 2 - 30, 2006  
Viewing hours: Sat, 12 - 5 pm; Mon - Fri, by appointment  
Contact: Claudia R. Treviño (210) 380-6508 | [c-artstudio@hotmail.com](mailto:c-artstudio@hotmail.com)  
Gabriel Guzman (210) 643-8089 | [gabrielguzmanphoto.com](http://gabrielguzmanphoto.com)



**SATURDAY, SEPTEMBER 23, 2006**

**WILLIAM D'AMATO**

***Eye Of The Beholder***

Color and Black & White Images

D'Amato Studio  
315 Burr Road, San Antonio, TX 78209

Opening reception: Saturday, September 23, 6 - 9 pm  
Exhibit on display: September 23 - October 15, 2006  
Viewing hours: By appointment after opening reception  
Contact: William D'Amato (210) 822-3444  
[bjdamato@msn.com](mailto:bjdamato@msn.com)





FOTOSEPTIEMBREUSA®  
SAFOTO®  
2006 EXHIBITIONS PROGRAM

BASIC LISTINGS

IN CHRONOLOGICAL ORDER BY OPENING RECEPTION DATE

---

WWW.FOTOSEPTIEMBREUSA.COM  
WWW.SAFOTOFESTIVAL.COM

### THURSDAY, AUGUST 24, 2006

#### EDDIE MUNOZ

##### *Eddie Muñoz: Los Caminos De La Vida | Emulsion on Metal*

SA Express News Photography Gallery | Navarro Campus  
Southwest School of Art & Craft  
1201 Navarro, San Antonio, TX 78205 | (210) 271-3374 | [www.swschool.org](http://www.swschool.org)  
Exhibit on display: August 24 - October 22, 2006

#### MELANIE RUSH-DAVIS

##### *Living San Antonio Postcard | Interactive Camera Obscura*

Hennessey Children's Studio | Ursuline Campus (and other locations)  
Southwest School of Art & Craft  
300 Augusta, San Antonio, TX 78205 | (210) 271-3374 | [www.swschool.org](http://www.swschool.org)  
Exhibit on display: August 24 - September 23, 2006 (SSAC and other locations)

#### STUDENTS FROM THE SSAC YOUNG ARTISTS PROGRAM

##### *Fresh Eyes: Pinhole Photographs & Other Alternative Processes*

Navarro Hall Gallery | Navarro Campus  
Southwest School of Art & Craft  
1201 Navarro, San Antonio, TX 78205 | (210) 271-3374 | [www.swschool.org](http://www.swschool.org)  
Exhibit on display: August 24 - October 22, 2006

### THURSDAY, AUGUST 31, 2006

#### DAN BORRIS

##### *Las Canchas: Juego de Pelota | Rural Ball Courts of Latin America*

Blue Star Contemporary Art Center | Main Gallery  
116 Blue Star, San Antonio, TX 78204 | (210) 227-6960 | [www.bluestarartspace.org](http://www.bluestarartspace.org)  
Exhibit on display: August 31 - October 8, 2006

#### TOM CUMMINS

##### *New Works by Tom Cummins*

Blue Star Contemporary Art Center | Middle Gallery  
116 Blue Star, San Antonio, TX 78204 | (210) 227-6960 | [www.bluestarartspace.org](http://www.bluestarartspace.org)  
Exhibit on display: August 31 - October 8, 2006

#### PATTY CARROLL

##### *Elvis Tribute Artists*

Blue Star Contemporary Art Center | Project Space  
116 Blue Star, San Antonio, TX 78204 | (210) 227-6960 | [www.bluestarartspace.org](http://www.bluestarartspace.org)  
Exhibit on display: August 31 - October 8, 2006

#### RICARDO ROMO

##### *China*

Blue Star Contemporary Art Center | Gallery 4  
116 Blue Star, San Antonio, TX 78204 | (210) 227-6960 | [www.bluestarartspace.org](http://www.bluestarartspace.org)  
Exhibit on display: August 31 - October 1, 2006

### FRIDAY, SEPTEMBER 1, 2006

#### BRYAN DE LA GARZA

##### *Even the worst photographer...*

Three Walls  
106 D Blue Star, Building B, San Antonio, TX 78204 | (210) 212-7185, (210) 313-0643 (Bryan de la Garza)  
Exhibit on display: September 1 - 22, 2006

### SATURDAY, SEPTEMBER 2, 2006

#### DENISE A. BARRON

##### *Portals To The Past*

Artistic Endeavors  
Building #25, La Villita, San Antonio, TX 78205 | (210) 222-2497 | [www.artend.com](http://www.artend.com)  
Exhibit on display: September 2 - 30, 2006

### THURSDAY, SEPTEMBER 7, 2006

**ARTURO ALMEIDA, SIMON AZAR, MICHAEL NYE, BOB PRICE, AL RENDON, RICARDO ROMO  
TRISH SIMONITE, KATHY VARGAS, LUISA WHEELER**

***Gemini Ink Inkstravaganza* | Photo Exhibition & Auction**

Peraux Room, St. Anthony Hotel

300 Travis, San Antonio, TX 78205 | Gemini Ink (210) 734-9673

Exhibit on display: Thursday, September 7, 3 - 5 pm

**ALEJANDRA PALACIOS, CAROLINA RUBIO, LAURA VARELA, GUILLERMINA ZABALA**

***Sound Gallery: De Ushuaia A San Antonio* | Multimedia exhibit documenting local and international musicians**

UTSA Downtown Art Gallery | 501 West Durango, San Antonio, TX 78207

(210) 458-4983 | [www.utsa.edu/artcollection](http://www.utsa.edu/artcollection)

Exhibit on display: September 7 - 30, 2006

**PAULINE STEVENS**

***Poco Cambia En La Cocina***

Instituto de México | 600 Hemisfair Plaza, San Antonio, TX 78205 | [www.imexicano.org](http://www.imexicano.org)

Isabel Rico (210) 223-5100

Exhibit on display: September 7 - November 5, 2006

### FRIDAY, SEPTEMBER 8, 2006

**KIM SMITH**

***Lone Star Love | Photography Of Texas Flag Enthusiasm***

Louis J. Blume Academic Library Gallery | St. Mary's University

One Camino Santa María, San Antonio, TX 78228

Kim Smith (210) 872-1178

Exhibit on display: September 8 - October 4, 2006

**APPLAUSE FOUNDATION & CARVER COMMUNITY CENTER**

***San Antonio African American History Alive: A Photo Exhibit***

Carver Community Cultural Center

215 North Hackberry, San Antonio, TX 78202 | [www.thecarver.org](http://www.thecarver.org)

Yvonne Armstrong (210) 722-1946

Exhibit on display: September 8 - 30, 2006

### SATURDAY, SEPTEMBER 9, 2006

**WORKSHOP BY MELANIE RUSH-DAVIS**

***Pinhole, Photograms & Other Alternative Processes***

Lende Photography Studio | Navarro Campus

Southwest School of Art & Craft

1201 Navarro, San Antonio, TX 78205 | (210) 224-1848 | [www.swschool.org](http://www.swschool.org)

Three-week workshop: September 9, 16, & 23; 1 - 3 pm. Tuition, \$120. Ages 12 - 16

### THURSDAY, SEPTEMBER 14, 2006

**RON BINKS**

***Photographs - Fifty Years***

UTSA Art Gallery

6900 NW Loop 1604, San Antonio, TX 78249 | (210) 695-5406

Exhibit on display: August 23 - September 24, 2006

### WEDNESDAY, SEPTEMBER 20, 2006

**RALPH HOWELL, aka MARCO THE MAGNIFICENT**

***Marco The Magnificent & His Camera Obscura Circus Van***

Navarro Patio | Navarro Campus

Southwest School Of Art & Craft

1201 Navarro, San Antonio, TX 78205 | (210) 271-3374 | [www.swschool.org](http://www.swschool.org)

September 20 - 24, 11 am - 4 pm

Unusual Camera Obscura views of the Central Library



### FRIDAY, SEPTEMBER 22, 2006

#### SYMPOSIUM

***A discussion of historical, practical and theoretical approaches of alternative photographic processes***

Russell Hill Rogers Lecture Hall | Navarro Campus

Southwest School of Art & Craft

1201 Navarro, San Antonio, TX 78205 | (210) 248-1848

Symposium: 1 - 4 pm. Free

### SATURDAY, SEPTEMBER 23, 2006

#### RALPH HOWELL, VICTOR PAGONA

***Make your own Pinhole Portrait with Marco The Magnificent & His Camera Obscura Circus Van***

Navarro Patio | Navarro Campus

Southwest School Of Art & Craft

1201 Navarro, San Antonio, TX 78205 | (210) 271-3374 | [www.swschool.org](http://www.swschool.org)

Interactive public participation: 10 am - 2 pm. Free. Today only

### SATURDAY, SEPTEMBER 30, 2006

#### WORKSHOP BY NANCY CAVENDER

***Van Dyke Brown, Polaroid Transfers & Other Alternative Processes***

Lende Photography Studio | Navarro Campus

Southwest School of Art & Craft

1201 Navarro, San Antonio, TX 78205 | (210) 224-1848 | [www.swschool.org](http://www.swschool.org)

Three-week workshop: Sep 30, Oct 7 & 14; 1 - 3 pm. Tuition, \$120. Ages 12 - 16

### FRIDAY, OCTOBER 13, 2006

#### LECTURE BY FRANCE SCULLY OSTERMAN

***The Revival Of Historic Photographic Processes***

Ellison Lecture Hall | Navarro Campus

Southwest School of Art & Craft

1201 Navarro, San Antonio, TX 78205 | (210) 224-1848 | [www.swschool.org](http://www.swschool.org)

Lecture: 7 pm. Free

### SATURDAY, OCTOBER 14, 2006

#### WORKSHOP BY FRANCE SCULLY OSTERMAN

***Ruby Ambrotype Workshop***

Lende Photography Studio | Navarro Campus

Southwest School of Art & Craft

1201 Navarro, San Antonio, TX 78205 | (210) 224-1848 | [www.swschool.org](http://www.swschool.org)

Workshop: 9 am - 4:30 pm. Call SSAC before September 29 for registration

Tuition \$225. More details at [www.swschool.org](http://www.swschool.org)



WWW.FOTOSEPTIEMBREUSA.COM  
WWW.SAFOTOFESTIVAL.COM

Festival Director  
MICHAEL MEHL

Festival Coordinator  
ANN KINSER

Webmaster  
PAUL VAUGHN

Advisors  
PATRICIA MENDOZA  
JOSEFINA MONTERO  
Zul Ediciones, México DF

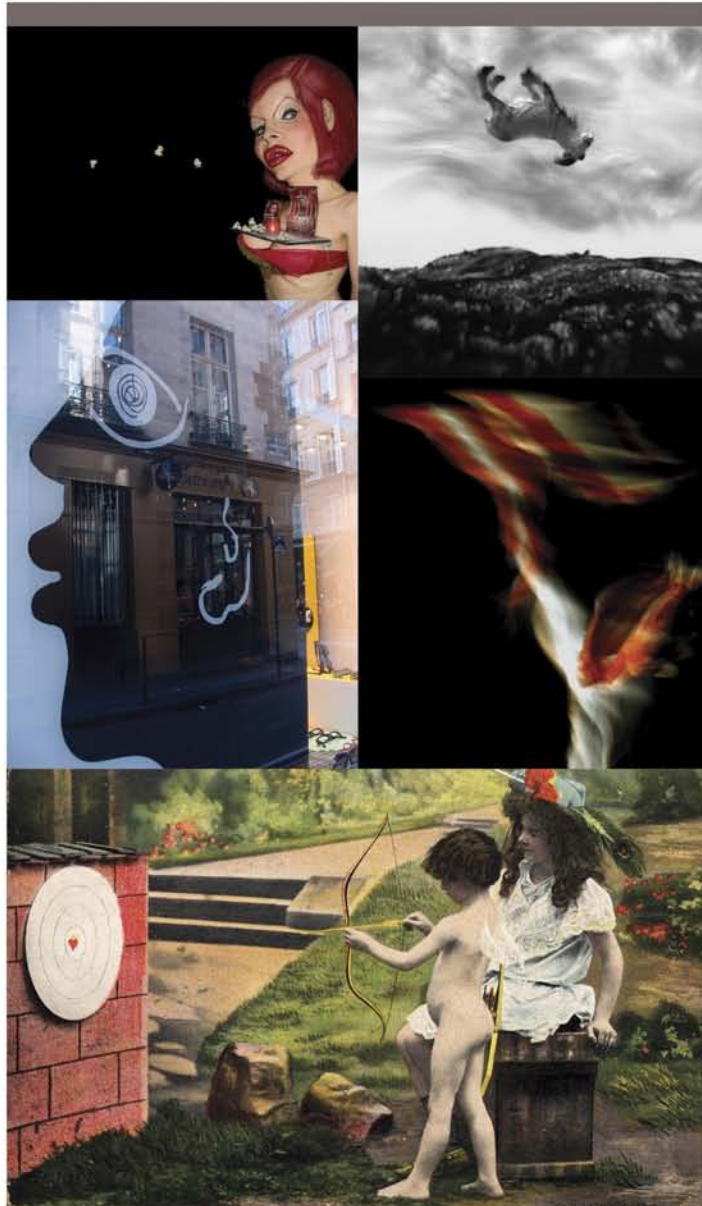
FOTOSEPTIEMBRE USA and SAFOTO are privately owned Service Marks | Trademarks  
registered with the United States Patent & Trademark Office  
All rights and usage reserved

Use of the FOTOSEPTIEMBRE USA and SAFOTO logos and | or names  
is restricted exclusively to those exhibitions and events that are  
registered with the festival, which are featured  
in this program and in our web site

---



fallartfestivals.  
san antonio texas  
www.fallartfestivals.com



FOTOSEPTIEMBREUSA®  
SAFOTO®

WWW.FOTOSEPTIEMBREUSA.COM  
WWW.SAFOTOFESTIVAL.COM

fallartfestivals®  
san antonio texas  
www.fallartfestivals.com